

- 12-inch Sunlight Viewable Display
- Full VGA 800x600 High Resolution LCD
- 16 ch WAAS GPS Smart Antenna with 15 meters (50 ft) of cable Included
- 2 Video Camera or DVD (NTSC or PAL) Inputs
- Customizable Picture in Picture Video Window
- 1 VGA Video Output, connects to compatible TV or Monitor
- Dual Frequency Fish Finder Capable (with purchase of FF520)
- Capable of displaying AIS Targets and Information*
- C-MAP NT+ or Max Cartography Capable
- Worldwide Background Map with Detail up to 2.0 NM Included
- Stores 3000 Marks and 50 Routes

*with purchase of AIS Receiver



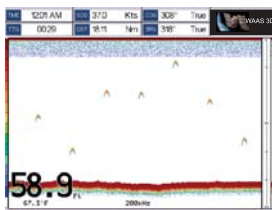
EXTERNAL GPS ANTENNA



MAIN MENU



Picture in Picture



FISH FINDER (FF520 Required)



AIS Target (AIS Required)



Find every destination in style with the CP500 WAAS enabled GPS chartplotter (EGNOS Europe and MSAS Asia). Providing up to less than 2 meters (6.6"), accuracy the CP500 is designed to navigate you quickly and accurately to your destination. The CP500 boasts a crisp high-definition 12-inch 800x600 sunlight viewable TFT display. Connect to compatible Standard Horizon VHF for DSC distress and position polling functions. To find fish, wrecks and record water temperature, simply connect the optional FF520 50/200 kHz black box fish finder and transducer. Dedicated MARK, ROUTE and GOTO keys allow for fumble free operation. The 5 user programmable hot keys allow quick and easy access to a number of preprogrammed navigation displays. These units come fully equipped with a bracket and flush mount hardware.

TFT 256 Color 12-Inch Display (Screen Resolution: 800 x 600)

There is no question about it. With a big, bold display there is no mistaking the information. It can easily be seen in locations where the Chart Plotter cannot be mounted directly in front of you.

User Points: 3000/Routes: 50 (Max 50 waypoints each)

Beauty and brains! Not only does the CP500 boast a beautiful display, it can also be loaded with enough Waypoints and Marks to guarantee you will always arrive at your destination.

C-Map NT+ or MAX Compatible

C-MAP is the best cartography available. The CP500 comes pre-loaded with detailed cartography down to the 2NM scale. If you require greater detail, C-MAP offers many different chart configurations to suit your needs. The CP500 has 2 C-Map Cartography slots for larger coverage areas.

2 Video Input and 1 VGA monitor Output

The CP500 has 2 connections that allows a video signal from an optional camera or DVD (NTSC or PAL) to be connected and shown on the whole display, or a Picture in Picture window. The CP500 also has a VGA video output which allows the plotters display to be repeated on compatible Monitors and TV's at a second station.

Fish Finder

The CP500 is capable being a fish finder by connecting the FF520 sounder module. To find fish, wrecks and record water temperature, simply connect the optional FF520 50/200 kHz black box fish finder and transducer.




AIS Targets

Large vessels routinely transmit their navigation information. The CP500 is capable of displaying these signals (when AIS receiver connected) as Targets on the chart page in relation to your position. In addition the CP500 can be setup to alarm when a target ship is within a specific time or range zone, to alert you to avoid a collision.

Additional Features

North Up and Course Up display setting supports Loran TD's Dedicated GOTO, MARK and ROUTE key Split Screen Fish Finder when optional FF520 with a bracket and Flush-mount hardware and 16 ch WAAS GPS antenna with 15 meters (50 ft) of cable.

OPTIONAL ACCESSORIES

	<p>500W Transducers DST520 - 2" Nylon Thru-hull Depth and Temp DST521 - Transom Mount Depth/Speed and Temp DST523 - 2" Bronze Thru-hull Depth and Temp DST525 - In-Hull depth DST526 - Thru-hull Depth/Speed and Temp</p> <p>1000W Transducers DST527 - In-hull mount Depth DST528 - Thru-hull Depth and Temp With Fairing Block</p>	 <p>ACVC10 Video Adaptor Cable</p>
<p>Black Box Fish Finder FF520 Dual Frequency Black Box Fish Finder compatible (500W or 1000W depending on transducer connected)</p>	<ul style="list-style-type: none"> •Dimensions 193.3 W x 55.5 H x 174.3 D mm (7.6" W x 2.2" H x 6.9" D) •Weight 1 kg (2.2 lb) •Frequency 50/200 kHz •Max Depth 365 m (1200 ft) @ 200 kHz (1000 W) 1219 m (4000 ft) @ 50 kHz (1000 W) •Power output 500 W or 1000 W, depend on transducer •Voltage range 10-35 VDC •Current drain STBY: 142 mA @ 12 VDC MAX: 1.42 A @ 12 VDC 	 <p>VGC10 Video Output Cable</p>

SPECIFICATIONS	
Power Consumption	1.5A max @12V WITH EXTERNAL GPS and TWO VIDEOCAM CONNECTED
Power supply	10-35 Volt DC
Interface	Input/Output Interface NMEA-0183
Display	TFT Color LCD (active area 12") sunviewable technology
Display Resolution	800 x 600 pixels
Cartography	C-MAP NT+/MAX C-CARD
Operating temperature range	0° C ~ +55° C (32° F ~ 131° F)
Storage temperature	-20° C ~ +70° C (-4° F ~ 158° F)
Keyboard	Silicon rubber, backlight
Dimensions	391 W x 258 H x 71.7 D mm (15.4" x 10.2 x 2.8")
Weight (without bracket)	3 kg (6.6 lb)
User Points (Marks/Waypoints)	3000
Routes	50 (max 50 Waypoints each)
Track Points	3000 (recordable in 5 Tracks)
NMEA Output sentences	GLL, VTG, BWC, WCV, APA, APB, HDG, BOD, XTE, RMA, RMB, RMC, GGA, HSC, DBT, DPT, MTW, VHW.
NMEA Input sentences	BWC, DBT, DPT, DSC, DSE, GGA, GLL, GSA, GSV, HDG, HDM, HDT, MTW, MWD, MWV, PCMPA, PCMPD, PJRC, PJRCF, PKODG, RMC, RTE, TLL, VDM, VHW, VTG, VWR, VWT, WPL

GPS WAAS SMART RECEIVER SPECIFICATIONS	
Physical Characteristics	
Color	Ivory white
Dimensions	97 mm (3.8") in diameter x 32 mm (1.3") in height (flush mounted) or 61.5 mm (2.4") on flag-pole mount
Weight (without cable)	160 g (5.6 oz)
Cable	white 15 m (50 ft) 8x28AWG cable with 6 pins female connector
Electrical Characteristics	
Input Voltage	10 VDC to 35 VDC unregulated
GPS Receiver Sensivity	-143 dBm (typical)
GPS Performance	
Receiver	WAAS (North America), EGNOS (Europe), MSAS (Asia)
Geodetic Datum	WGS84
Channels	16
Frequency	1575.42 MHz (L1, C/A code)
Acquisition Time	
Reacquisition	< 1 second
Hot Start	< 3.5 seconds
Warm Start	< 33 seconds
Cold Start	< 40 seconds
Accuracy	
GPS	< 2.5 m
DGPS	< 2.0 m
NMEA Output	
Messages	GGA, RMC, GSA, GSV, TXT

Standard Horizon reserves the right to make changes and enhancements to products at our discretion. Current specifications are therefore subject to change without notice.